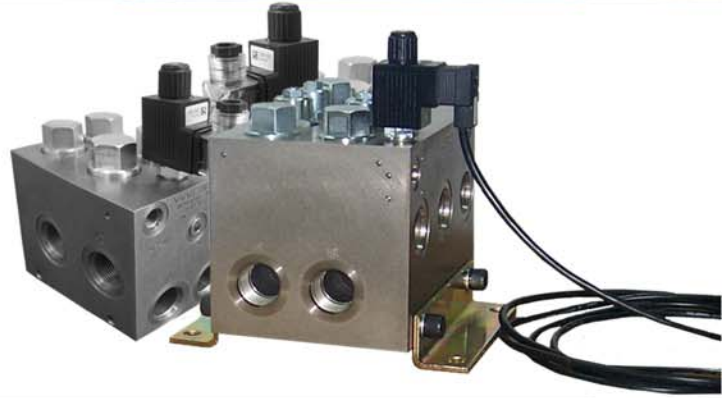
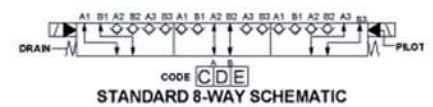
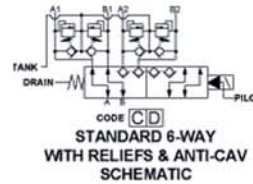
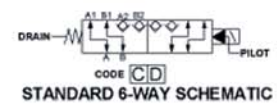
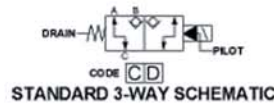


The Solution For High Flow and High Pressure Requirements



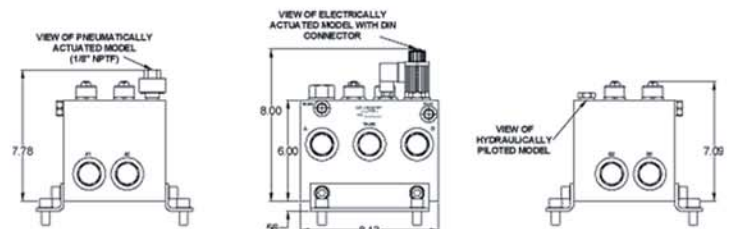
Features & Benefits

- Flows up to 240 gpm
- 5000 psi (6000 psi intermittent)
- Pneumatic, hydraulic or solenoid operated
- Full Cartridge Style Valving
- Low Leakage



Additional Information

- All ports can be pressurized up to 3000 psi for aluminum and 5000 psi for ductile iron.
- Maximum leakage is 5 drops per minute.
- Shifting of valve is not affected by pressure differential in working lines.
- A separate connection to tank for the drain is recommended.
- Also a 300 psi minimum hydraulic pressure differential between the pilot & drain must be maintained for proper operation.
- Back pressure in the tank line is additive to the relief valves by up to 5.5 times the valve setting.
- Relief adjustment ranges up to 6000 psi.
- Turn screw clockwise to reduce setting.
- Working Lines = SAE 16
- Drain, Pilot & TP = SAE 6



Contact Us For More Information

Toll Free

Tel: 1 (888) 626-4365
Fax: 1 (800) 263-5807

Canada

1799 Argentia Road
Mississauga, Ontario L5N 3A2

Local & International

Tel: +1 (905) 363-2400
Fax: +1 (905) 363-1191

USA

3940 Olympic Blvd.
Erlanger, KY 41018

Online

www.Lynch.ca
sales@lynch.ca