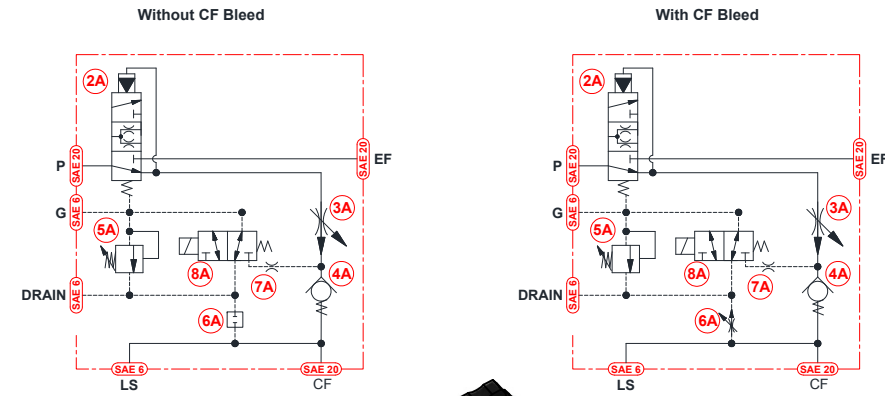
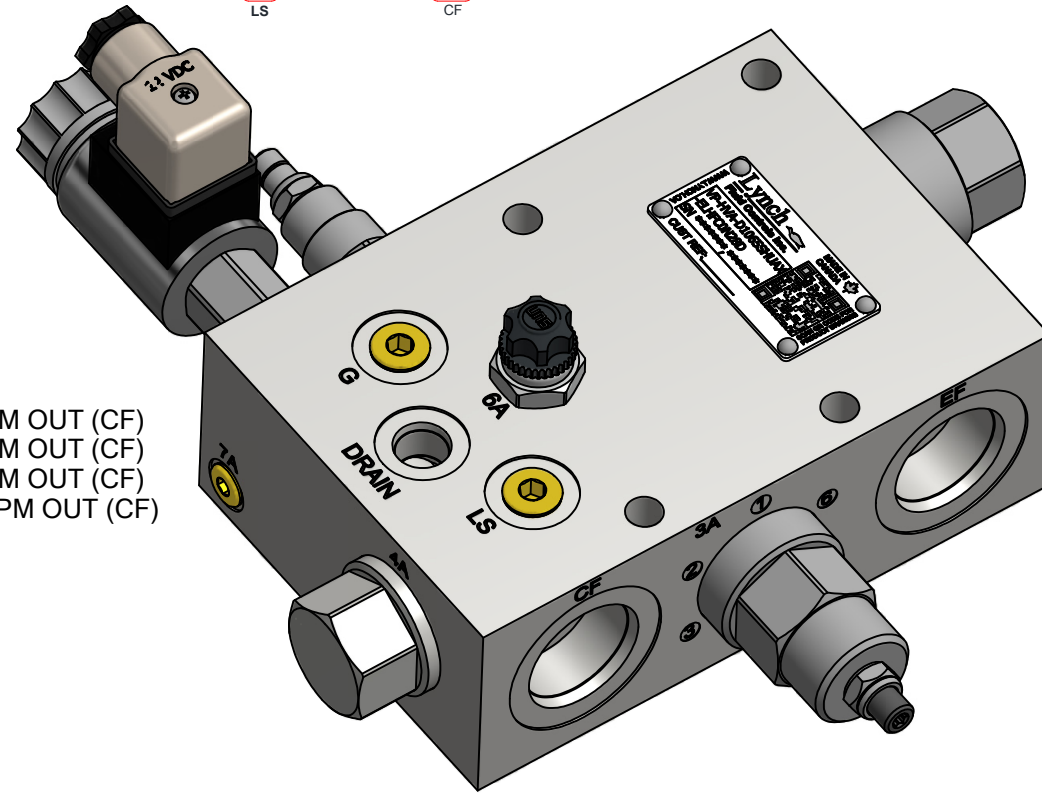


# TYPICAL SCHEMATICS FOR SINGLE PUMP INPUT UNITS

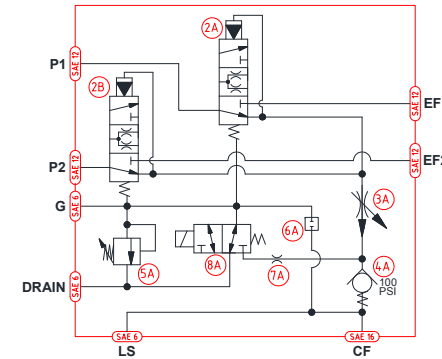


**SINGLE PUMP MAX FLOW:**  
 1015 = 15 GPM INLET (P1), ~ 11 GPM OUT (CF)  
 1035 = 35 GPM INLET (P1), ~ 25 GPM OUT (CF)  
 1065 = 65 GPM INLET (P1), ~ 46 GPM OUT (CF)  
 1130 = 130 GPM INLET (P1), ~ 91 GPM OUT (CF)

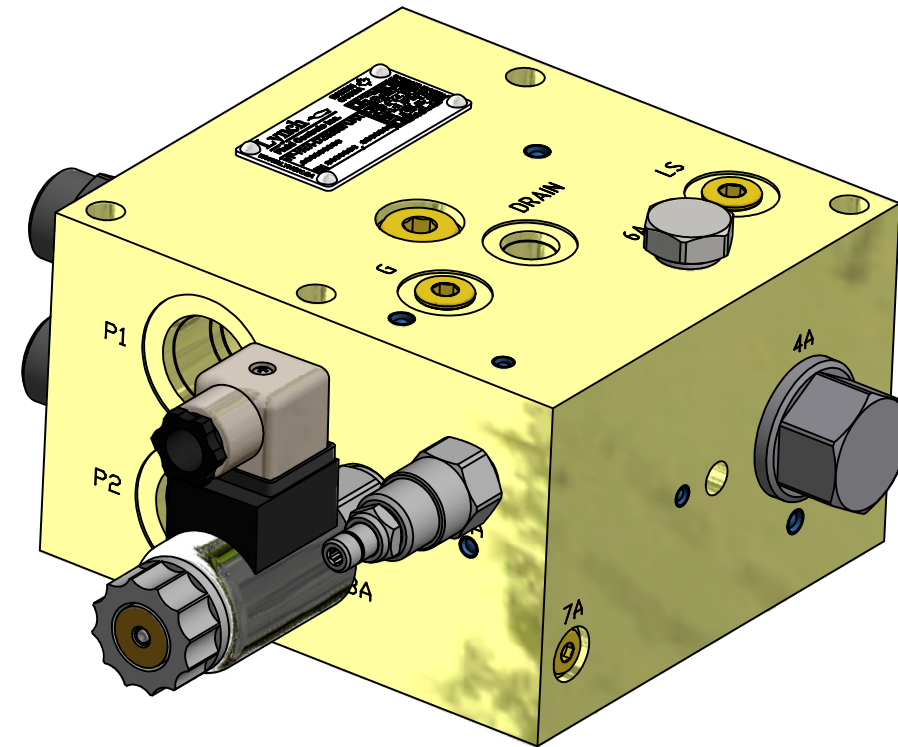


# TYPICAL SCHEMATICS FOR DUAL PUMP INPUT UNITS

(Shown w/o CF Bleed)



**DUAL PUMP MAX FLOW:**  
 2015 = 2x 15 GPM INLET (P1 & P2), ~ 21 GPM OUT (CF)  
 2035 = 2x 35 GPM INLET (P1 & P2), ~ 49 GPM OUT (CF)  
 2065 = 2x 65 GPM INLET (P1 & P2), ~ 91 GPM OUT (CF)  
 2130 = 2x 130 GPM INLET (P1 & P2), ~ 182 GPM OUT (CF)



## PART NUMBER SELECTION

VP-	PRODUCT TYPE	Circuit (Determined by valve size)		MATERIAL	FUNCTION	Flow Capacity			Port Type		Port Size (Determined by Flow)		Mounting Type		Maj Rev Level	Min Rev Level	Modulating Spring Rate (2A)		Needle Control (3A)		Needle Range (3A) (Determined by Valve Size)		Check Crack PSI (4A)		Adjustment Range (5A)			Orifice Options (6A)			SEAL MATERIAL		CONTROL		SOLENOID CONNECTOR OPTIONS				
		CODE	TYPE			CODE	TYPE	Select	CODE	TYPE	Select	CODE	TYPE	CODE			SIZE	CODE	THREAD	CODE	Level	CODE	Version	CODE	TYPE	CODE	TYPE	CODE	TYPE	CODE	TYPE	Select	CODE	TYPE	Select	CODE	MATERIAL	Select	CODE
Valve Pack	Hammer Valve	A	Standard HVD	A	1	Single Pump	O15	15 GPM	S	SAE STD	D	#8	U	UNC	X	Rev -	X	X	E	75 PSI	L	STANDARD SCREW	F	0.281	F	100 PSI	A	500 TO 3000 PSI	0	Std W/ No CF Bleed	N	BUNA	14	14 Vdc	D	DIN W/ S18211TC4*1			
		C	Standard HVD w ext orf cav	D	2	Dual Pump	O35	35 GPM			F	#12			A	Rev A			G	0.563			C	500 TO 6000 PSI	1	Std W/ Manual CF Bleed	V	VITON	28	28 Vdc									
							O65	65 GPM			H	#16							H	0.688			W	500 TO 4500 PSI															
							130	130 GPM			I	#20							I	0.85																			

## TYPICAL PART NUMBER: VPHVA-D1065SHUAX-ELHFC0N28D

DI Body, Single Pump, 65 GPM Input. SAE #16 Ports, UNC mounting, 75 PSI Spring, Screw Adjustment, 0.688" Max Orifice, 100 PSI Check, 500 to 6000 PSI, No CF Bleed, Buna Seals, 28 VDC Coil w/ DIN Connector

PROPRIETARY NOTICE  
 This Drawing describes a Proprietary Product of Lynch Fluid Controls Inc. which may not be reproduced in whole or in part nor given to a third party without written permission from Lynch Fluid Controls Inc.



1799 Argentia Rd.  
 Mississauga, Ontario  
 Canada L5N 3A2  
 Phone : 1 905 363 2400  
 Phone : 1 888 626 4365  
 Fax : 1 905 363 1192  
 www.lynch.ca